

Black Leadership Commission on AIDS of Rochester

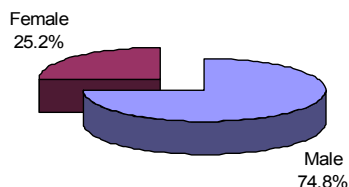
Prevalence	Excludes Prisoners			Including Prisoners		
	Living HIV	Living AIDS	CUM AIDS	Living HIV	Living AIDS	CUM AIDS
Living HIV/AIDS Cases* Diagnosed through December 2005	926	1,329	2,689	1,190	1,620	3,146

Incidence	Excludes Prisoners			Including Prisoners		
	Initial HIV	Initial AIDS	Total	Initial HIV	Initial AIDS	Total
Newly Diagnosed HIV/AIDS Cases* diagnosed January – December 2005	67	113	180	75	144	219

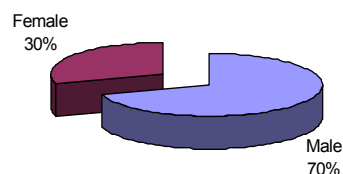
* Cases reported and confirmed through December 2006

Prevalence				Incidence			
Gender				Gender			
	Living HIV**	Living AIDS ***	Cumulative		Initial HIV	Initial AIDS	Total
Male	630	921	2,012	Male	47	79	126
Female	296	408	677	Female	20	34	54
Unk	0	0	0	Unk	0	0	0

HIV/AIDS Cases* by Gender



Newly Diagnosed HIV/AIDS Cases* by Gender



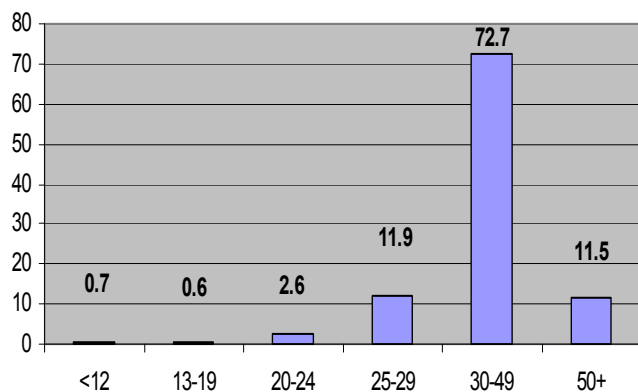
Age

	Living HIV**	Living AIDS ***	Cumulative
12 & under	15	7	19
13-19	29	9	16
20-24	79	29	70
25-29	144	162	321
30-49	539	969	1,954
50+	120	153	309
Unk	0	0	0

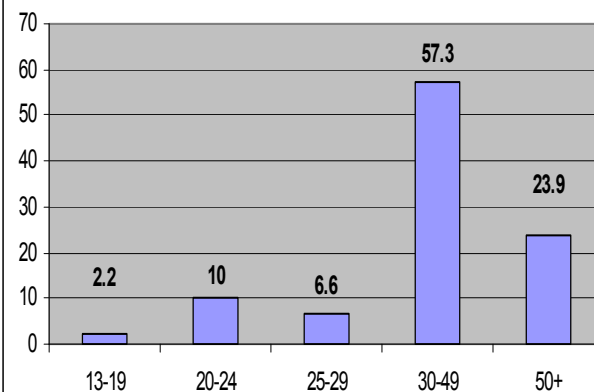
Age

	Initial HIV	Initial AIDS	Total
12 & under	0	0	0
13-19	3	1	4
20-24	13	5	18
25-29	9	3	12
30-49	30	73	103
50+	12	31	43
Unk	0	0	0

HIV/AIDS Cases* by Age

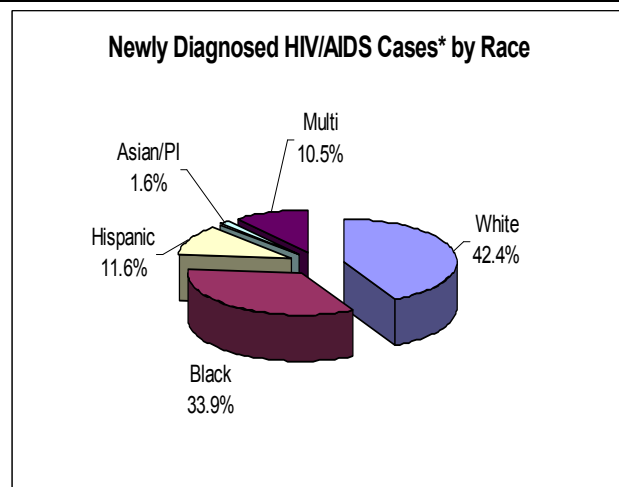
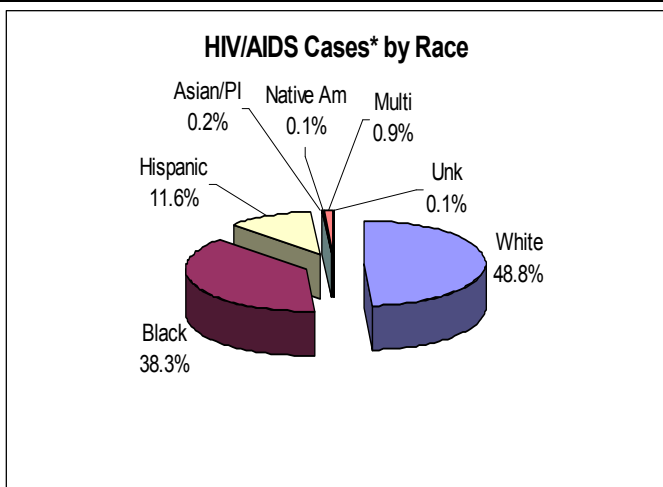


Newly Diagnosed HIV/AIDS Cases* by Age



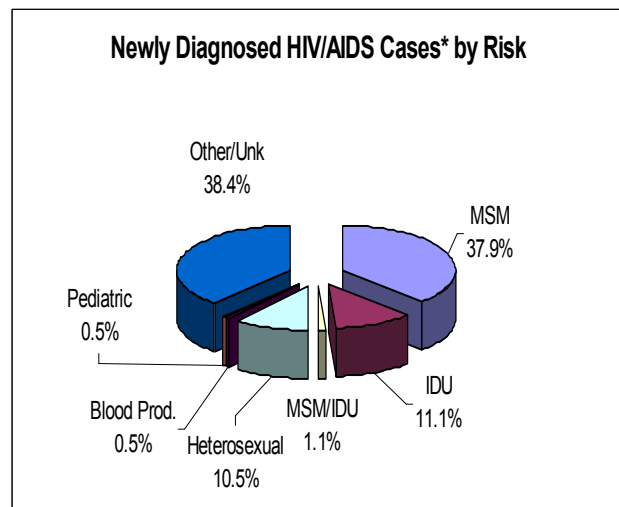
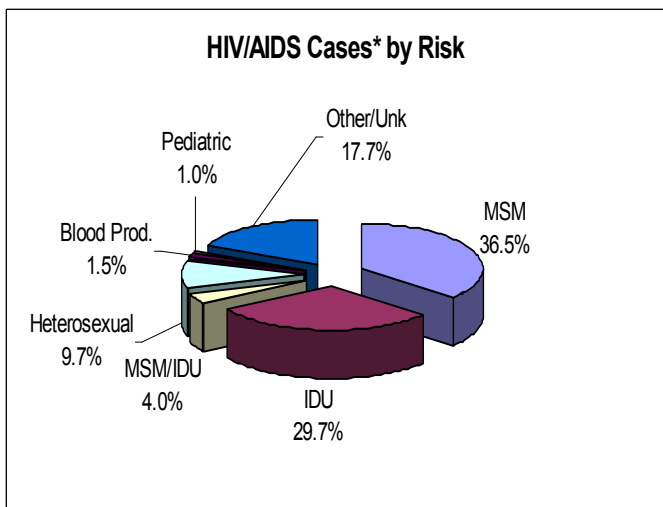
Race			
	Living HIV**	Living AIDS ***	Cumulative
White	384	562	1,313
Black	372	561	1,031
Hispanic	129	178	311
Asian/PI	4	3	5
Multi Race	33	23	24
Native Am	3	1	3
Unk	1	1	2

Race			
	Initial HIV	Initial AIDS	Total
White	18	58	76
Black	20	41	61
Hispanic	11	10	21
Asian/PI	3	0	3
Multi Race	15	4	19
Native Am	0	0	0
Unk	0	0	0



Risk			
	Living HIV**	Living AIDS ***	Cumulative
MSM	324	418	981
IDU	134	334	798
MSM/IDU	20	41	108
Hetero	136	171	260
Blood Prod.	1	14	39
Pediatric Risk	17	14	27
Unk	294	337	476

Risk			
	Initial HIV	Initial AIDS	Total
MSM	25	43	68
IDU	1	19	20
MSM/IDU	1	1	2
Hetero	6	13	19
Blood Prod.	0	1	1
Pediatric Risk	0	1	1
Unk	34	35	69



* Excludes Prisoners

** All cases reported and confirmed from June 2000 - December 2006

*** All cases reported and confirmed from 1983 - December 2006

The data are from the New York State Department of Health, NYS HIV/AIDS Surveillance Semi Annual Reports

